



不锈钢真空保温瓶

Stainless steel vacuum flask

经济实用 经典永流传

Economic and practical

Classics last forever

型号Model: SVF-350RL2/500RL2/690RL2/1000RL2

容量Capacity: 0.35/0.5/0.75/1L





— 食品材质, 安全健康 —

Food contact material, Safe and Healthy

▷ 产品采用奥氏体不锈钢06Cr19Ni10 (不锈钢SUS304)、与水接触部分为食品接触用PP、硅胶材质, 安全健康。

The product is made of SUS 304 stainless steel as well as all of the plastic parts come from food contact PP or silicone, which is very safe and health

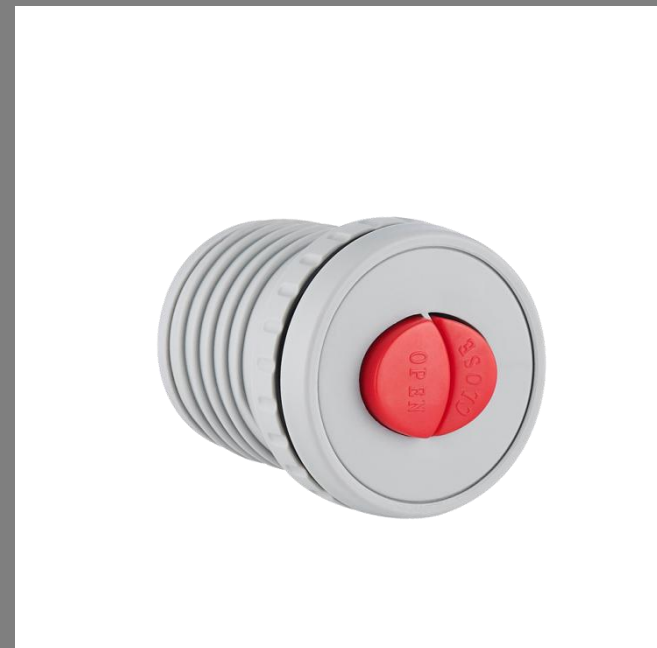
▷ 主体采用较厚钢材, 耐冲击, 不易损坏, 更耐用。

The body comes from more thick stainless steel that is durable and shock resistance.



瓶身body
不锈钢SUS304

塑件plastic parts
食品接触用PP、硅胶材质
food cotact pp or silicone





— 匠心质造 品质精良 —
originality manufacture
excellent quatlity

▷ 杯体及瓶口打磨光滑，磨砂纹路均匀细腻，还原金属本身的质感。

Body and mounth of flash are smooth polished, which have delicate uniform frosted grain and restore the quality of metal

▷ 杯盖可做水碗，方便喝水。

the cup cover could be used for drinking as a bowl





— 匠心质造 品质精良 —
originality manufacture
excellent quality

▷ 内表面电解处理，色泽均匀，有光泽，形成钝化膜，不易黏附污渍，抗腐蚀能力强。

The surface of inner is treating with electrolytic, which formed a passive film to resist stain and corrosion. It is uniform and shiny color





— 旋拧内塞 保温持久 —
screwing inner plug
keep warm

▷ 开/关按键式出水内塞，倒水方便。
water inner plug with switch button
design is easy to pour

▷ 红色开/关按键，即便倒水后忘记关闭，
拧上瓶盖的同时出水塞将自动关闭，操作
简单，安全防漏。

Red switch button is equipped with a
self-locking function.
Even if you forget to close the plug
after pouring, it will automatically
close. It is easy to operate and safe
to prevent leakage

▷ 旋拧内塞，螺纹较长，保温更持久。
Screwing inner plug with long thread
keep warm last longer





— 产品参数 — specification

代码ID: 102009/102010/102011/102070

型号Model: SVF-350RL2/500RL2/690RL2/1000RL2

容量Capacity: 0.75/1L

颜色Color: 本色、金色 Nature golden

材质Material: 奥氏体不锈钢06Cr19Ni10

(不锈钢SUS304)、食品接触用PP、硅胶材质

SUS 304 stainless steel with food contact PP or

silicone parts

保温时效temperature retention:

50 (12H) /40/44/50°C以上 (24小时)

50°C (12 hours) /above 40/44/50°C (24hours)

包装尺寸packing:

包装规格Packing size: 12支/箱 12pcs/ctn



关于我们 About us

China air pressure Insulated pot center
Shanghai industrial design center
Shanghai certified enterprise tech center
Shanghai high-tech and science giant
Shanghai brand cultivation model enterprise

Solid HQ:
**Room 1701,the civil aviation
center**



official sponsor of china golf team-Solid Ware, was established in 1991.
Over the past 29 years, we have been specialized in the stainless steel insulation ware (cup and pot) industry, and have been engaged in R&D, manufacturing and brand terminal service. Won the title of “shanghai brand” ,”shanghai famous trade mark” which have been keeping over the years so far.
It is one of Shanghai’s high-tech and small giant of technology and science enterprises ,Our trademark "SI LE DE" is a key trademark protected by Shanghai government. So far we have the "Home Series”, “Travel Series”, “Office series”, “Hotel Series" four series of products over 300 items. Products exported to more than 50 foreign countries and regions (Europe, North America, Japan, Australia. etc.)



中国高尔夫球队赞助商
OFFICIAL SPONSOR OF CHINA GOLF TEAM

*Better quality
Better life*

